

VACUUM

PRODUCTS OVERVIEW

2022



Increased flexibility, efficiency
and productivity.



Industries



We offer tailored solutions for any application and fully satisfy all needs in the most innovative industrial sectors.



Automotive

Specific components for car and body assembly applications, as well as moulding lines for press departments.



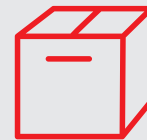
Wood

Suction cups with high wear resistance, ideal for handling porous and uneven surfaces. Vacuum pumps with integrated blow-off and tolerant of dust, which is typically present in the sector.



Plastic

Full range available for the sector. Vacuum pumps easily integratable in EOATs, extremely lightweight, with compact form factor and complete with integrated configurations. Suction cups are mark-free and high-temperature-tolerant.



Packaging

Full range of high-performance polyurethane suction cups. FDA-approved suction cups for handling flow packs, cartons and unpackaged food.



Pharma & Medical

Compliant and certified products, ideal for the pharmaceutical and medical industries. Pumps with integrated control logic for low energy consumption.



Logistic

Custom projects using 3D printing technology to ensure greater flexibility in gripping and meeting customer requirements.



Metal sheet

Suction cups with high grip and high shear strength to handle irregular sheet metal, even in the presence of oil.



Glass

Mark-free suction cups, suitable for regular, irregular/curved surfaces.



Suction cups

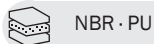


SHEET METAL / GLASS / PLASTIC HANDLING APPLICATIONS



VG.MB + VG.MF

- Handling metal sheet with or without oil
- Glass panel handling
- High wear resistance
- Permanent fittings with hexagon



NBR · PU



VG.U + VG.B + VG.B.SFO + VG.LB + VG.LB.SFO + VG.CF

- Universal and plastic applications
- Suitable for standard application, flat and slightly curved surface
- Excellent grip stability, cleats increase the friction and avoid deformation



NBR · HNBR · Red Silicone · Transparent FDA Silicone

APPLICATIONS FOR PACKAGED AND UNPACKAGED PRODUCTS - SNACKS AND BAGS



VG.FP + VG.BC + VG.SBC

- Ideal for handling packaged flow pack products, packets of cookies and bars
- Robust bellows, soft flexible lip and specific high flow fittings



Red Silicone · Transparent FDA Silicone

NEW

NEW



VG.BPG + VG.LPG

- Ideal for handling difficult-to-handle items such as bags and flow packs
- The versions without internal insert are ideal for handling unwrapped products such as pralines or biscuits with porous and uneven surfaces



Transparent FDA Silicone

NEW



VG.BR + VG.LBR + VG.LBO

- Suitable for handling snacks and food bars packed in flowpack
- Ideal for gripping and depositing on the side of the handled object
- Handling of stand-up pouches (Doypack®) containing liquids



Polyurethane 50 Shore



VG.FO

- Ideal for opening bags, vertical and horizontal packaging machines
- Handle thin and sensitive sheets, such as paper and plastic films



Transparent FDA Silicone

WOOD AND POROUS SURFACE APPLICATIONS



VG.BP + VG.GX + VG.IS

- Excellent gripping performance on corrugated and porous surface
- Available with 2.5 and 1.5 bellows (overturn applications)
- Large and very thin lips in the version PUR 30/60 Shore grey/red



PU 50 Shore green · PUR 30/60 Shore yellow/green - grey/red

HOT SURFACE AND POLYMER APPLICATIONS



VG.PAAT

- Ideal for objects (made of hot polymers and fibres) with flat or slightly curved surface
- Stainless steel nipple
- Suitable for high working temperatures up to 300 °C



PTFE

APPLICATIONS FOR UNPACKAGED FOOD PRODUCTS



NEW



VG.U + VG.B + VG.FP + VG.LB + VG.BDT

- Suitable for high working temperatures
- Silicone compliant with FDA 21 CFR 177.2600 and regulation (EC) No. 1935/2004
- Detectable suction cups (blue colour): a small amount of metal additive (Fe) is added to the rubber
- Ideal for handling bakery products with seeds



FDA Silicone · Detectable FDA-compliant silicone

Type of suction cup	Diameter (mm)
VG.U	6, 9, 11, 16, 22, 33, 42, 53
VG.B	6, 9, 11, 16, 22, 33, 42, 53, 77
VG.B.SFO	16, 22, 33, 42, 53
VG.CF	16, 22, 27, 33, 42, 53, 77, 112, 152
VG.LB	6, 9, 11, 16, 22, 33, 42, 53
VG.LB.SFO	16, 22, 33, 42, 53
VG.FP	15, 20, 30, 40
VG.BC	40, 50
VG.SBC	40, 50, 63
VG.MB	52, 63, 83, 103
VG.PAAT	16, 20, 30, 40

Type of suction cup	Diameter (mm)
VG.GX	10, 15, 20, 25, 35, 52, 75
VG.BP	10, 15, 20, 25, 35, 52, 75, 110, 150, 200
VG.IS	20, 25, 35, 45, 55, 70
VG.BR	20x45, 30x55
VG.LBR	20x45, 30x55
VG.LBO	40x90
VG.MF	20, 30, 45, 60, 80, 100, 120
VG.BPG	30, 41, 48, 55
VG.LPG	30, 41, 48
VG.FO	26, 33
VG.BDT	40



Multistage cartridges

MULTISTAGE EJECTORS FOR CUSTOM INTEGRATION



EJ-SMALL/MEDIUM/LARGE for custom integration solutions

- EJ-HF: High Vacuum Flow; Max Vacuum: -73 kPa
- EJ-HV: Extra Vacuum Level; Max Vacuum: -94 kPa
- EJ-LP: Low feed pressure; Max Vacuum level: -90 kPa



System accessories

VACUUM SWITCHES



VACUUM SWITCHES

- Adjustable electromechanical and pneumatic vacuum switches
- G1/8" and Push-in 6mm; PNP/NPN; pre-set: -30, -50, -70 kPa
- Connection M8x1 3-pin



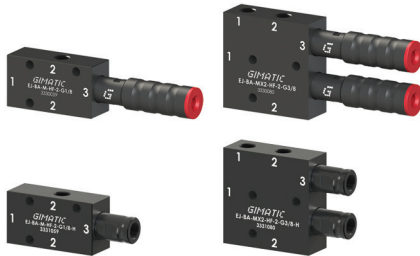
Vacuum pumps



VACUUM PUMPS FOR DECENTRALIZED AND CENTRALIZED APPLICATIONS



SMALL	MEDIUM	LARGE
0.18 ÷ 0.29 NI/s	0.57 ÷ 2.7 NI/s	2.6 ÷ 6 NI/s



EJ-BASIC

- Ideal for decentralized applications
- Possibility of integration close to the gripping point, low weight
- Available with two and three stages; EJ-MEDIUM cartridges (EJ-LP, EJ-HF, EJ-HV)

EJ-MEDIUM · EJ-MEDIUMx2
with and without integrated silencer



EJ-LINE

- Ideal for pick & place applications
- Vacuum pump in-line
- Clampable in-line design, to optimize overall dimensions
- Low weight

EJ-SMALL · EJ-MEDIUM
(EJ-LP, EJ-HF, EJ-HV)



EJ-SYS

- Manifold in Aluminum, Sensing and blow-off port
- Integrated silencer
- Available with two and three stage cartridges (EJ-LP, EJ-HF, EJ-HV)

EJ-SMALL · EJ-MEDIUM with
integrated silencer · EJ-LARGE
with and without integrated silencer

VACUUM PUMPS WITH INTEGRATED BLOWOFF AND QUICK DEVICE



SMALL	MEDIUM	LARGE
0.58 NI/s	0.57 ÷ 1.56 NI/s	2.6 ÷ 6 NI/s



EJ-BLOWOFF-MEDIUM

- Adjustable integrated blow-off tank
- Keeps the ejector clean and releases the handled product quickly
- Available with or without integrated vacuum switch

EJ-MEDIUM · EJ-MEDIUMx2
EJ-LARGE



EJ-ATM-LINE

- Restores atmospheric pressure inside the gripper for quick product release
- A single 3/2 valve controls the vacuum pump and the ATM release

EJ-SMALLx2 · EJ-MEDIUM
with integrated atmospheric quick
release valve



EJ-BSV-MEDIUM

NEW

- Ideal for applications in dusty environments
- Adjustable integrated blow-off tank
- Available with vacuum switch integrated
- Integrated silencer
- Anodised aluminium manifold

EJ-MEDIUM 2 stage (EJ-HF · EJ-HV)
high suction flow rate and low energy
consumption

LIGHTWEIGHT AND MODULAR VACUUM PUMPS



SMALL **MEDIUM** **LARGE**
 $0.18 \div 0.29$ NI/s $0.57 \div 1.35$ NI/s $2.6 \div 51.2$ NI/s



EJ-SLG

- High suction flow rate/low weight
- Manifold in POM material
- Available with vacuum switch integrated
- Available with two and three stages; EJ-MEDIUM and EJ-LARGE cartridges (EJ-LP, EJ-HF, EJ-HV)



EJ-MLG

- Modular and configurable
- Manifold in POM
- Designed for centralized vacuum system
- Available with 2, 3 or 4 EJ-LARGE cartridges with two or three stages
- Sensing and blow-off connections



EJ-CEN-LARGE **NEW**

- Ideal for centralised applications
- Modular and configurable from 5 to 16 two-stage EJ-LARGE cartridges (EJ-HF and EJ-HV)
- Compact size and high suction flow rate
- Robust design and low weight (aluminium body and PA12 silencer)
- Can work during suction or blow-off (remove silencer)



EJ-MEDIUM · EJ-LARGE with integrated silencer



EJ-LARGE 2 or 3 stage



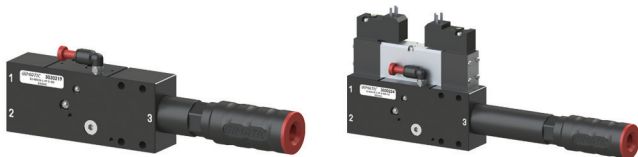
EJ-LARGE 2 stage

ISO VACUUM PUMP

NEW



LARGE
 $2.6 \div 6$ NI/s



EJ-BSVLG-LARGE-ISO

- Ideal for centralised and decentralised applications
- Excellent ratio between suction flow rate and compressed air consumption
- Available with ON/OFF vacuum valve, blow-off, and integrated manual override control
- POM manifold ready for mounting ISO 01 15407-1 3/2 x2 valve
- Available with two- and three-stage EJ-LARGE cartridges (EJ-HF and EJ-HV)
- In-line design for greater dirt tolerance
- Installable in series



EJ-LARGE 2 or 3 stage

BOOSTER - HIGH VACUUM FLOW FOR POROUS SURFACE APPLICATIONS



EJ-BBT BOOSTER

- Ideal for applications where a high suction flow rate is required at low vacuum degrees
- Transport of waste scraps and residual dust

Ø 10, 20, 30 and 40 mm



Via Enzo Ferrari, 2/4
25030 Roncadelle (BS) ITALY

tel. +39 030 2584655
fax +39 030 2583886

info@gimatic.com
www.gimatic.com



Sales Network

