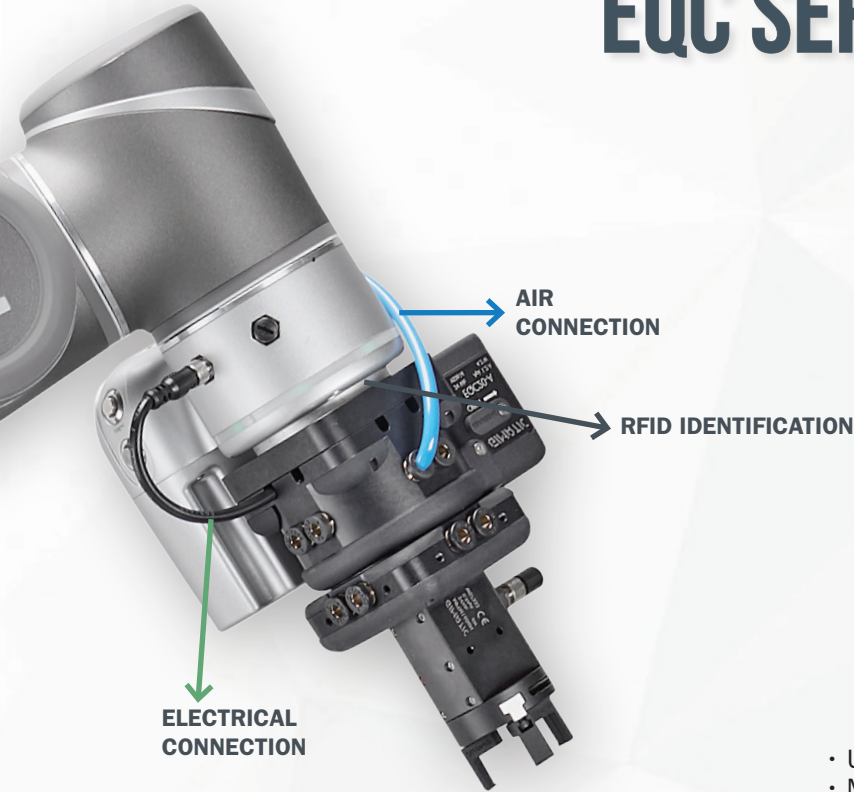


COLLABORATIVE ELECTRIC TOOL CHANGER EQC SERIES



- Fully automatic Plug & Play system.
- Collaborative Design.
- Lightweight

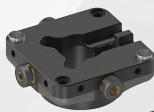


**RFID ELECTRICAL
SPRING PIN OPTION**

- Up to 5 kg, 20 kg and 100 kg payload.
- M8x1, 8 poles main power connection.
- Up to 6 pneumatic connections available.
- Accessories are available for electrical connections and RFID based tool identification.



EQC5-B
tool side



EQC5-A
robot side



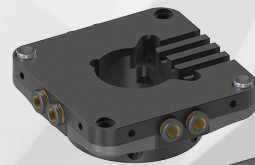
EQC20-B
tool side



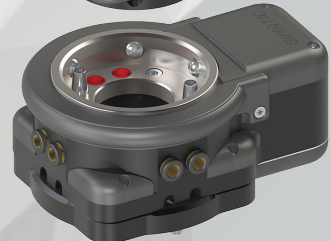
EQC20-A
robot side



EQC100-B
tool side



EQC100-A
robot side

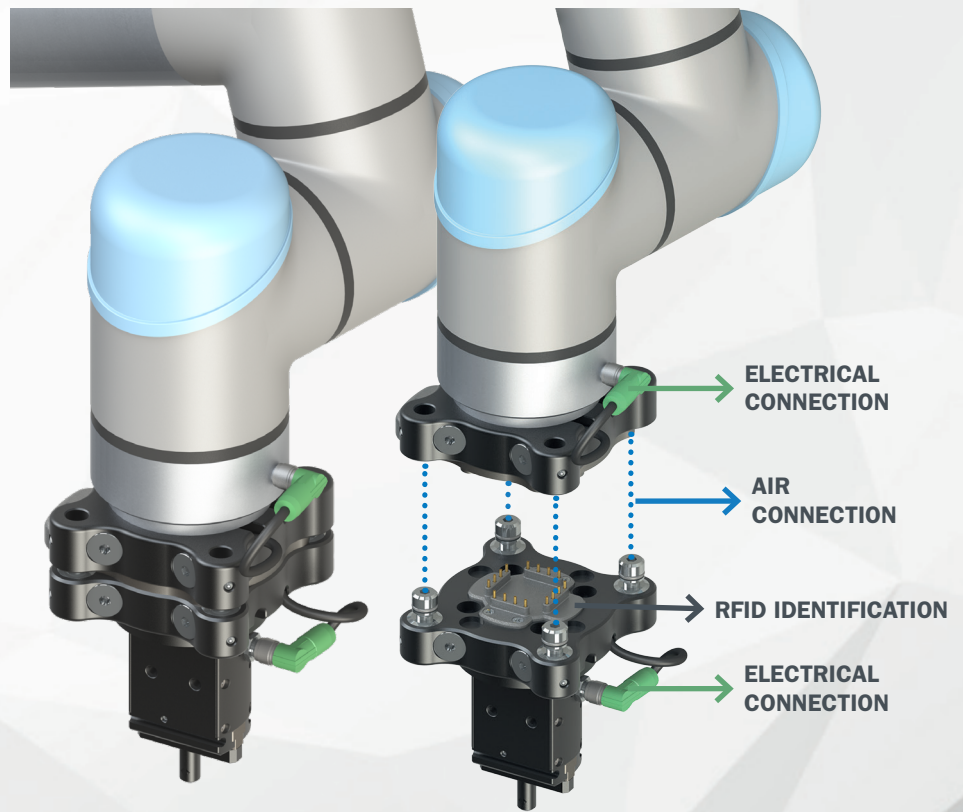
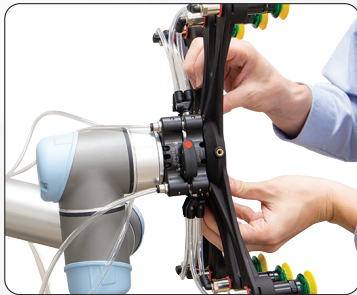


	EQC5	EQC20	EQC100
Mass of the master plate (EQC-A)	500 g	810 g	2700 g
Weight of the tool plate (EQC-B)	100 g	210 g	720 g
Maximum coupling distance	0.5 mm	1 mm	1 mm
Load capacity	5 kg	20 kg	100 kg
Power supply	24 Vdc ± 10% 0.25 Arms, 0.8 Apk	24 Vdc ± 10% 0.35 Arms, 1.2 Apk	24 Vdc ± 10% 1.5 Arms, 4.8 Apk



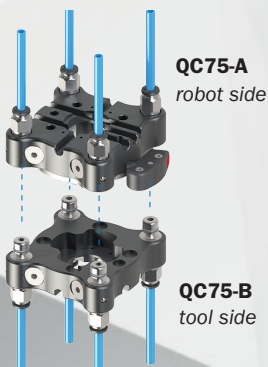
COLLABORATIVE MANUAL TOOL CHANGER QC75

- Easy and fast manual tool changer for collaborative applications.
- Any protruding edge disappeared and the user is protected against hits and scratches.



- Central electrical connector plugs.
- Modular core for configurable electrical connection.
- Payload 10 kg.
- Compatible with all cobot manufacturers (ISO 940-1-50-4-M6).

- Four air connections.



QC75-A



- RFID air electrical sprig pin option

