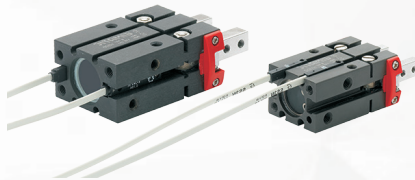


# COMPETENCE IN SENSORS

## ● MAGNETIC



- REED and GMR (Giant magnetoresistance) technology.
- 2 wires, PNP or NPN logic output.
- 100% tested on Helmholtz coil.
- Selected switch ON point.



- Cable or M8 connector output.
- "C", "T" and dovetail slot suitable.
- Full range of brackets and adapters.
- Optional extension cable connectors.

## ● INDUCTIVE



- Ø3, Ø4 mm inductive sensors with clean design profile.
- PNP or NPN logic output.
- 0.8 mm sensing distance.



- 2.5 m cable output.
- No problems in case of vibrations.

## ● ULTRASONIC



- M18x1 mm ultrasonic sensors.
- PNP/NPN digital output with NO or NC programmable logic 40-300 mm sensing range with programmable point via External Teach.



- M12, 4 pin connector output.
- Short and lightweight plastic body.
- Lock nuts and washers included.

## ● OPTICAL



- M18x1 mm photoelectric sensors.
- 100 mm background suppression without adjustment.
- PNP/NPN digital output, with programmable LO (Light Operate) or DO (Dark Operate) pulse logic.

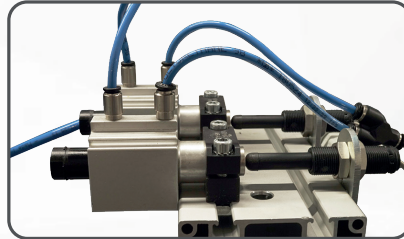


- Built-in LED indicator.
- M8, M12, 4 pin connector output.
- Short and lightweight plastic body.
- Lock nuts and washers included.



# COMPETENCE IN SENSORS

## ● TOUCH



- M14x1 mm reed switch
- Very long durability
- Two-wire cable for easy connection



- Compact shape and light weight
- Soft head to avoid damage to the product
- Detecting stroke range 2.5 ÷ 15 mm

## ● PROGRAMMABLE OUTPUTS

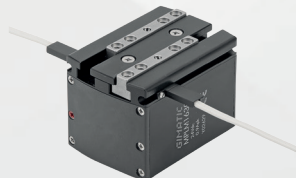


- 3 Switching points
- High reliability
- Single cable output, less cabling



- PNP; NPN
- NO; NC

## ● ANALOG



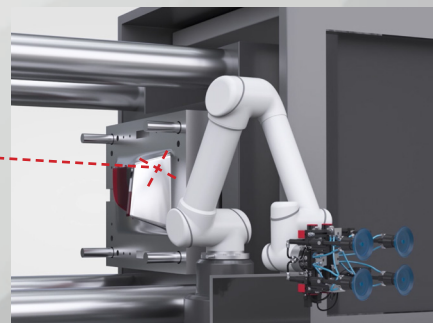
- SN and SS type magnetic sensors "C" slot suitable
- Up to 15mm stroke detection



- Voltage analog output 0÷10 [V]

## ● LASER CALIBRATION

**NEW**



- Laser pointer Ø12x40mm
- Red cross (635 nm) beam
- 24Vdc - 45mA

- PVC cable 2 wires (1.1 m)
- Easy EOAT assembly and positioning adjustment

